

Industrial

FOR SALE/LEASE

81,500 SF ON ±9.8 ACRES

2240

Fleetwood Drive

JURUPA VALLEY | CA 92509

PROPERTY DETAILS



81,500 SF Industrial Development



**Situated on ±9.8 Acres
(estimated ±6.68-8.18 useable acres,
buyer to verify)**



30' Clear



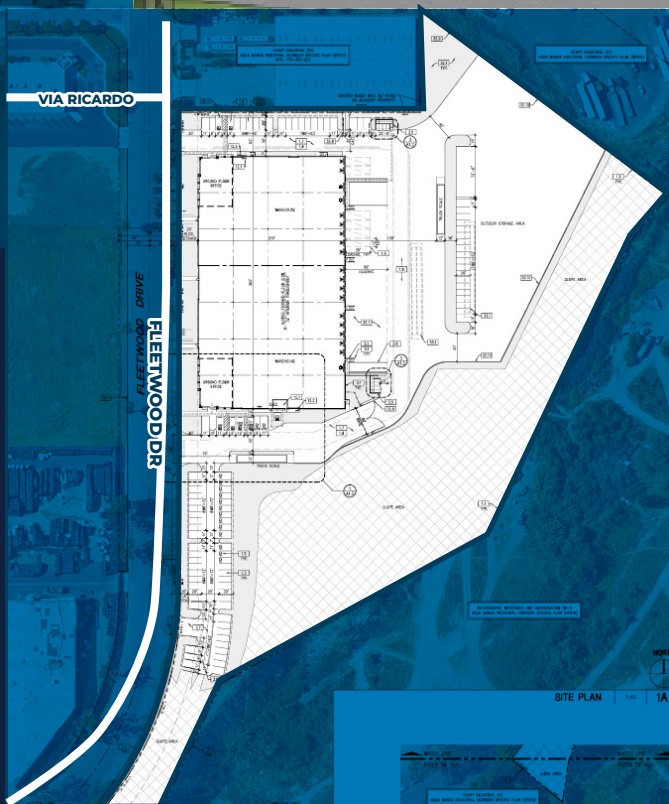
3 Oversized Ground Level Doors



MH Zoning (Manufacturing Heavy)



**Entitlements expected to be
completed Q2-Q3 2025.**



Gus Andros, SIOR
Executive VP
P: 909.912.003
gandros@daumcre.com
CA License #01010235

Juan Covarrubias
Executive VP
P: 909.652.9055
jcovarrubias@daumcre.com
CA License #01945028

Christian Lambajian
Associate
P: 909.912.0016
clambajian@daumcre.com
CA License #02196240

D/AQ Corp. #01129558. Maps Courtesy @Google & @Microsoft. Although all information is furnished regarding for sale, rental or financing is from sources deemed reliable, such information has not been verified and no express representation is made nor is any to be implied as to the accuracy thereof, and it is submitted subject to errors, omissions, changes of price, rental or other conditions, prior sale, lease or financing, or withdrawal without notice.

www.daumcommercial.com

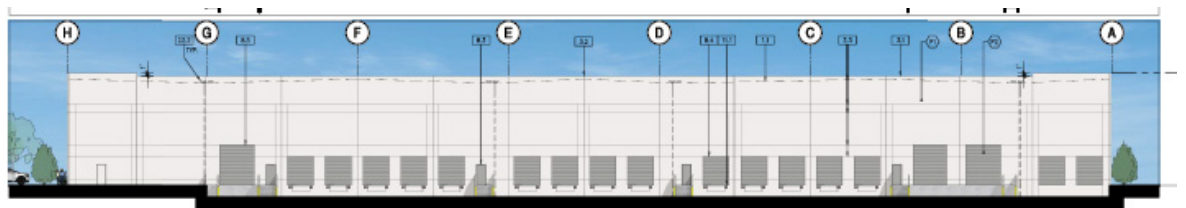
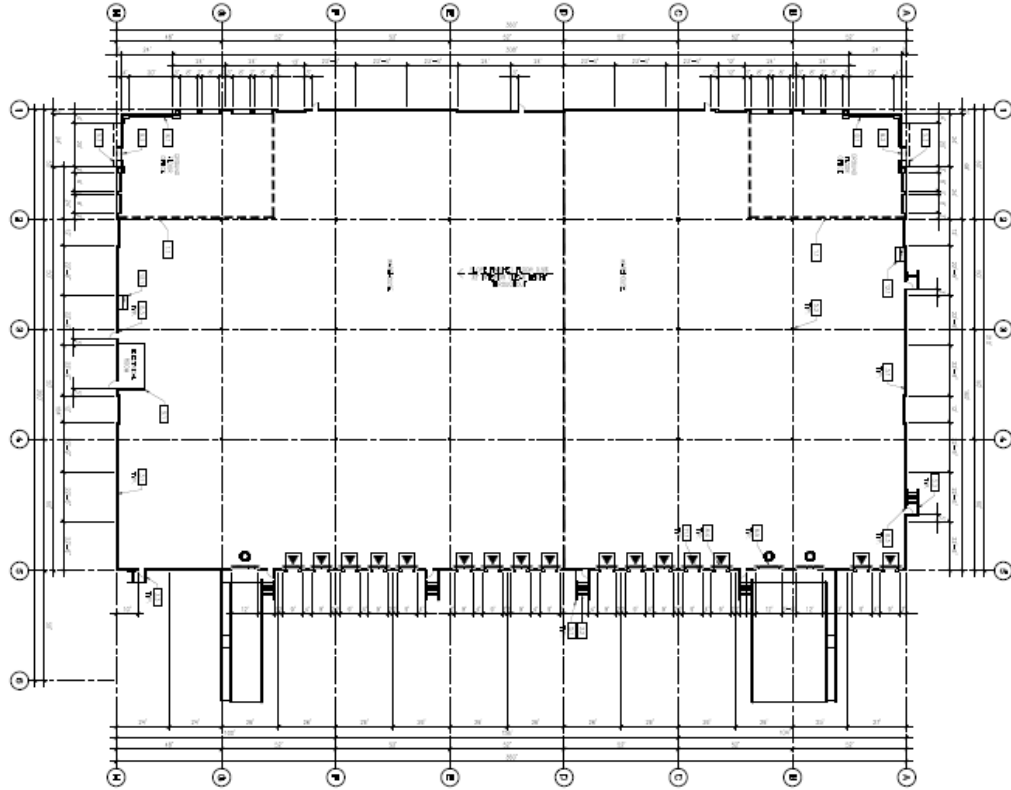
DAUM
COMMERCIAL REAL ESTATE SERVICES

Industrial

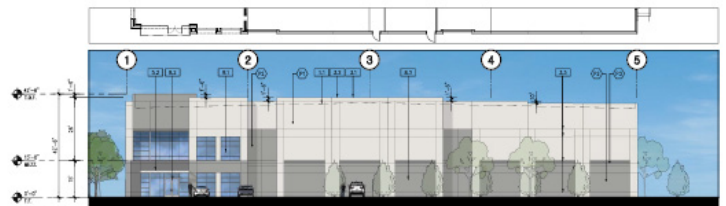
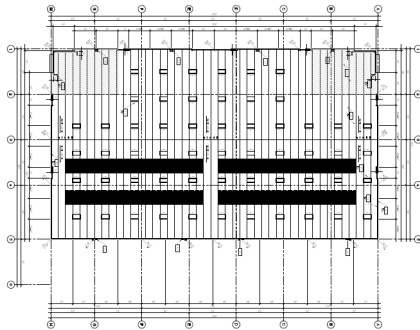
2240

Fleetwood Drive

FOR SALE/LEASE
81,500 SF ON ±9.8 ACRES



EAST ELEVATION | v



SOUTH ELEVATION | v

Gus Andros, SIOR
Executive VP
P: 909.912.003
gandros@daumcre.com
CA License #01010235

Juan Covarrubias
Executive VP
P: 909.652.9055
jcovarrubias@daumcre.com
CA License #01945028

Christian Lambajian
Associate
P: 909.912.0016
clambajian@daumcre.com
CA License #02196240

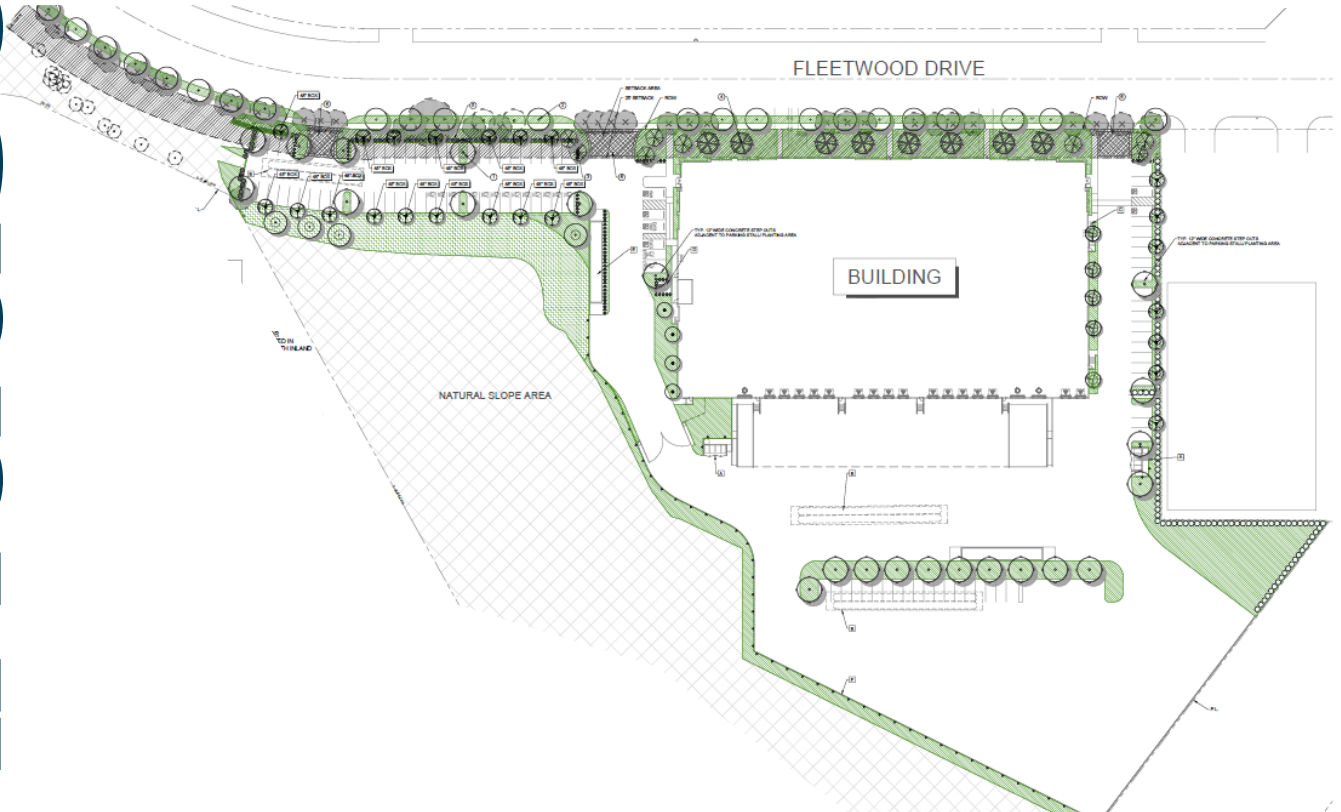
D/AQ Corp. #01129558. Maps Courtesy @Google & @Microsoft. Although all information is furnished regarding for sale, rental or financing is from sources deemed reliable, such information has not been verified and no express representation is made nor is any to be implied as to the accuracy thereof, and it is submitted subject to errors, omissions, changes of price, rental or other conditions, prior sale, lease or financing, or withdrawal without notice.

Industrial

2240

Fleetwood Drive

FOR SALE/LEASE
81,500 SF ON ±9.8 ACRES



FLEETWOOD DRIVE VIEW NTS 1



ENTRY 1 PERSPECTIVE NTS 2



ENTRY 2 PERSPECTIVE NTS 3



ENTRY 2 PERSPECTIVE NTS 4



NE PERSPECTIVE NTS 5



EAST ELEVATION PERSPECTIVE NTS 6

Gus Andros, SIOR
Executive VP
P: 909.912.003
gandros@daumcre.com
CA License #01010235

Juan Covarrubias
Executive VP
P: 909.652.9055
jcovarrubias@daumcre.com
CA License #01945028

Christian Lambajian
Associate
P: 909.912.0016
clambajian@daumcre.com
CA License #02196240

D/AQ Corp. #01129558. Maps Courtesy @Google & @Microsoft. Although all information is furnished regarding for sale, rental or financing is from sources deemed reliable, such information has not been verified and no express representation is made nor is any to be implied as to the accuracy thereof, and it is submitted subject to errors, omissions, changes of price, rental or other conditions, prior sale, lease or financing, or withdrawal without notice.

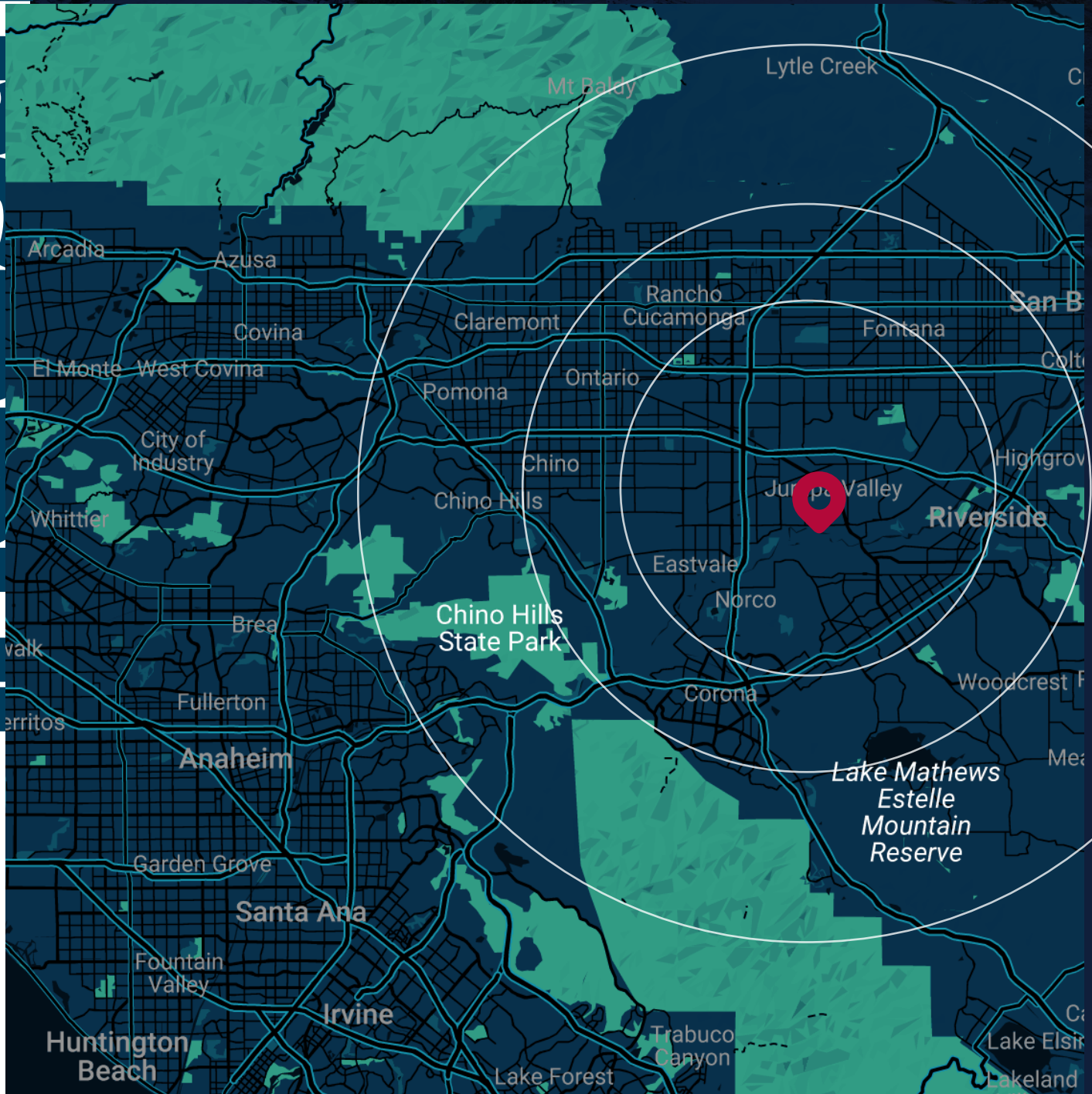
DAUM

2240

Fleetwood Drive

FOR SALE/LEASE

81,500 SF ON ±9.8 ACRES



Gus Andros, SIOR
Executive VP
 P: 909.912.003
 gandros@daumcre.com
 CA License #01010235

Juan Covarrubias
Executive VP
 P: 909.652.9055
 jcovarrubias@daumcre.com
 CA License #01945028

Christian Lambajian
Associate
 P: 909.912.0016
 clambajian@daumcre.com
 CA License #02196240

D/AQ Corp. #01129558. Maps Courtesy ©Google & ©Microsoft. Although all information is furnished regarding for sale, rental or financing is from sources deemed reliable, such information has not been verified and no express representation is made nor is any to be implied as to the accuracy thereof, and it is submitted subject to errors, omissions, changes of price, rental or other conditions, prior sale, lease or financing, or withdrawal without notice.

www.daumcommercial.com

DAUM
 COMMERCIAL REAL ESTATE SERVICES