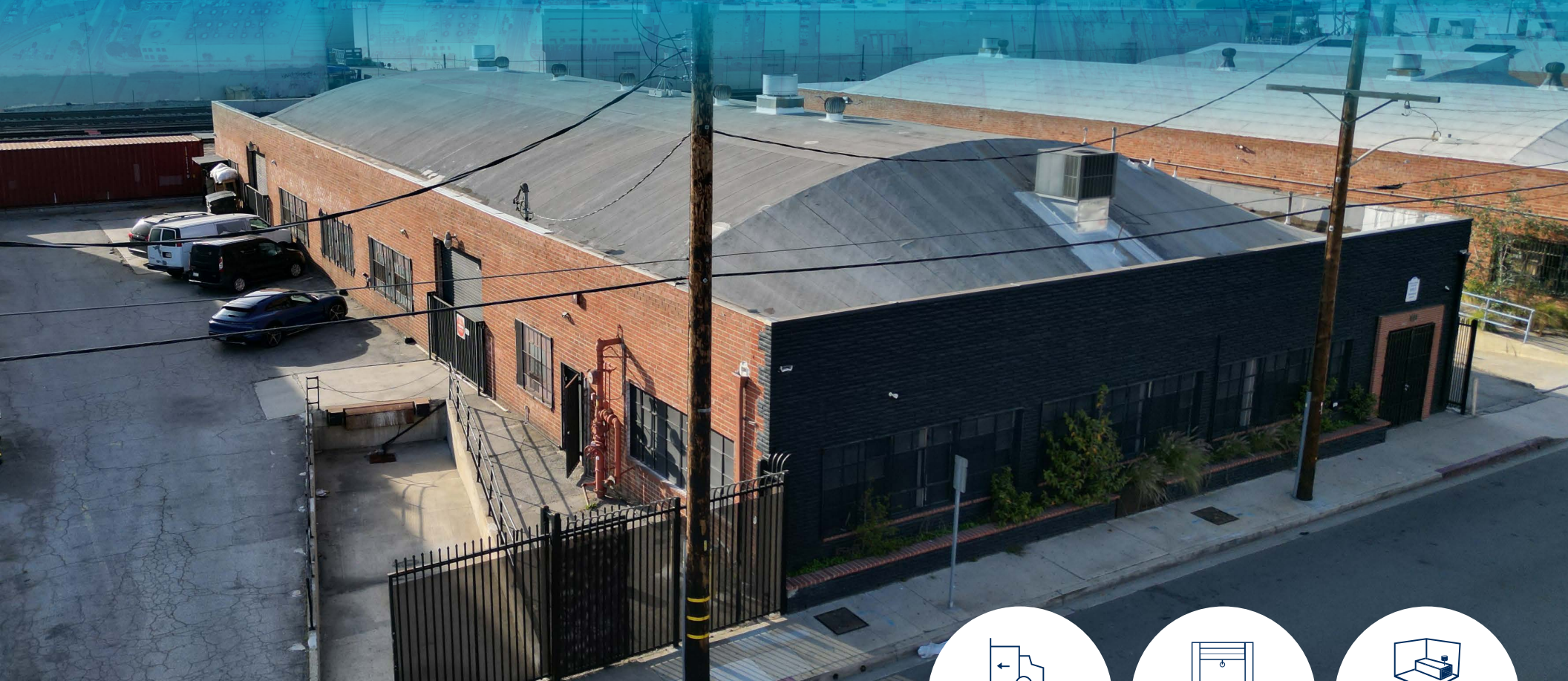


FOR SALE/LEASE

5015 HAMPTON ST
VERNON | CA

±11,410 SF INDUSTRIAL BUILDING



ONE (1)
TRUCKWELL



TWO (2)
GROUND LEVEL DOOR



±1,400 SF
OFFICE SPACE

FOR MORE INFORMATION, CONTACT:

LINDSAY PARK
ASSOCIATE VICE PRESIDENT
M: 213.222.5499
lpark@daumcommercial.com
CADRE #02178941

MOON LIM
EXECUTIVE VICE PRESIDENT
P: 213.308.2056
mlim@daumcommercial.com
CADRE #01903050

FOR SALE/LEASE

±11,410 SF INDUSTRIAL BUILDING

PROPERTY HIGHLIGHTS:

- ±11,410 SF of Building on ±20,561 SF of Land
- Free Span
- ±1,400 SF High Image Office
- 12' Clear Height
- One (1) Outside Truck Well
- Two (2) Ground Level Doors
- 400 A, 120/208 V, 3 P, and 4 W Power
- Excelent West Vernon Location
- VEM Zoning
- Minutes to 10 Freeway



FOR MORE INFORMATION, CONTACT:

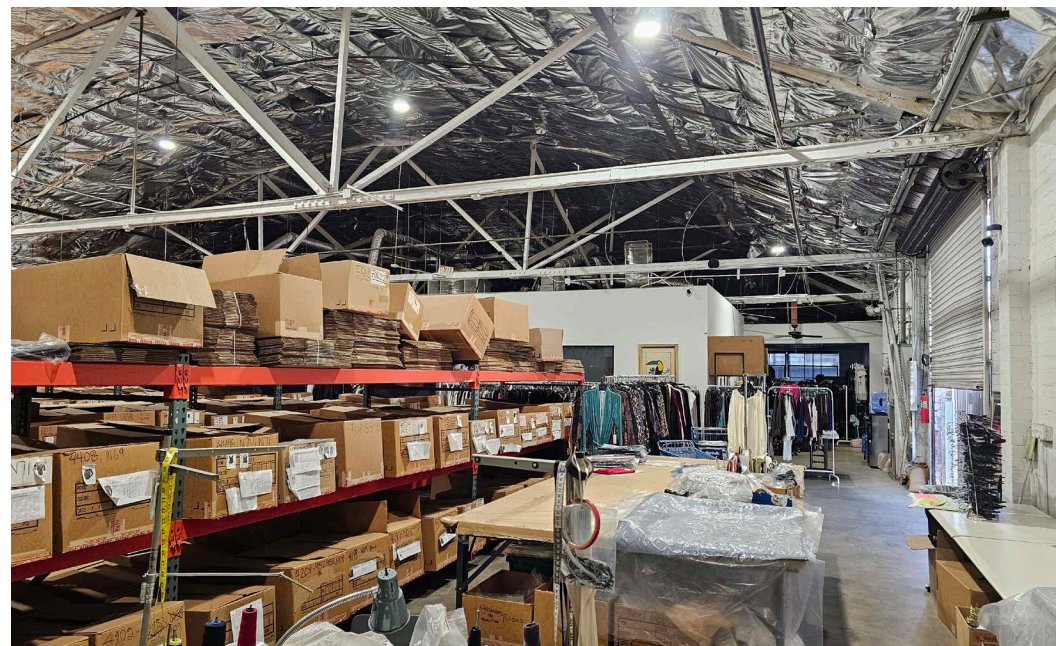
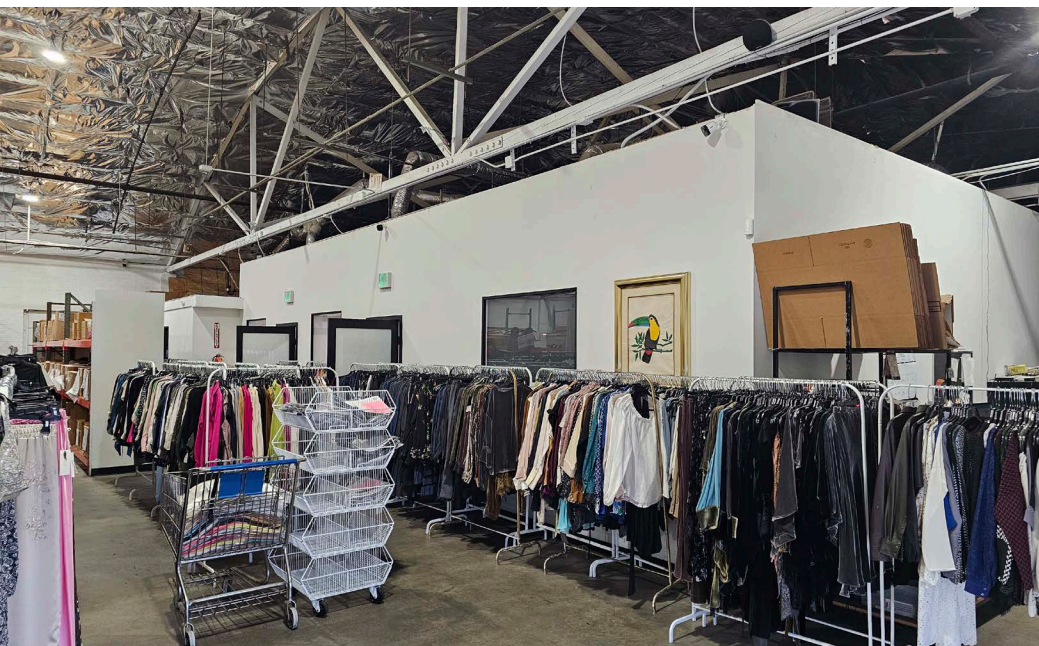
LINDSAY PARK
ASSOCIATE VICE PRESIDENT
M: 213.222.5499
lpark@daumcommercial.com
CADRE #02178941

MOON LIM
EXECUTIVE VICE PRESIDENT
P: 213.308.2056
mlim@daumcommercial.com
CADRE #01903050

PROPERTY HIGHLIGHTS

D/AQ Corp. #01129558. Maps Courtesy ©Google & ©Microsoft. Although all information is furnished regarding for sale, rental or financing is from sources deemed reliable, such information has not been verified and no express representation is made nor is any to be implied as to the accuracy thereof, and it is submitted subject to errors, omissions, changes of price, rental or other conditions, prior sale, lease or financing, or withdrawal without notice.

DAUM
COMMERCIAL REAL ESTATE SERVICES



FOR MORE INFORMATION, CONTACT:

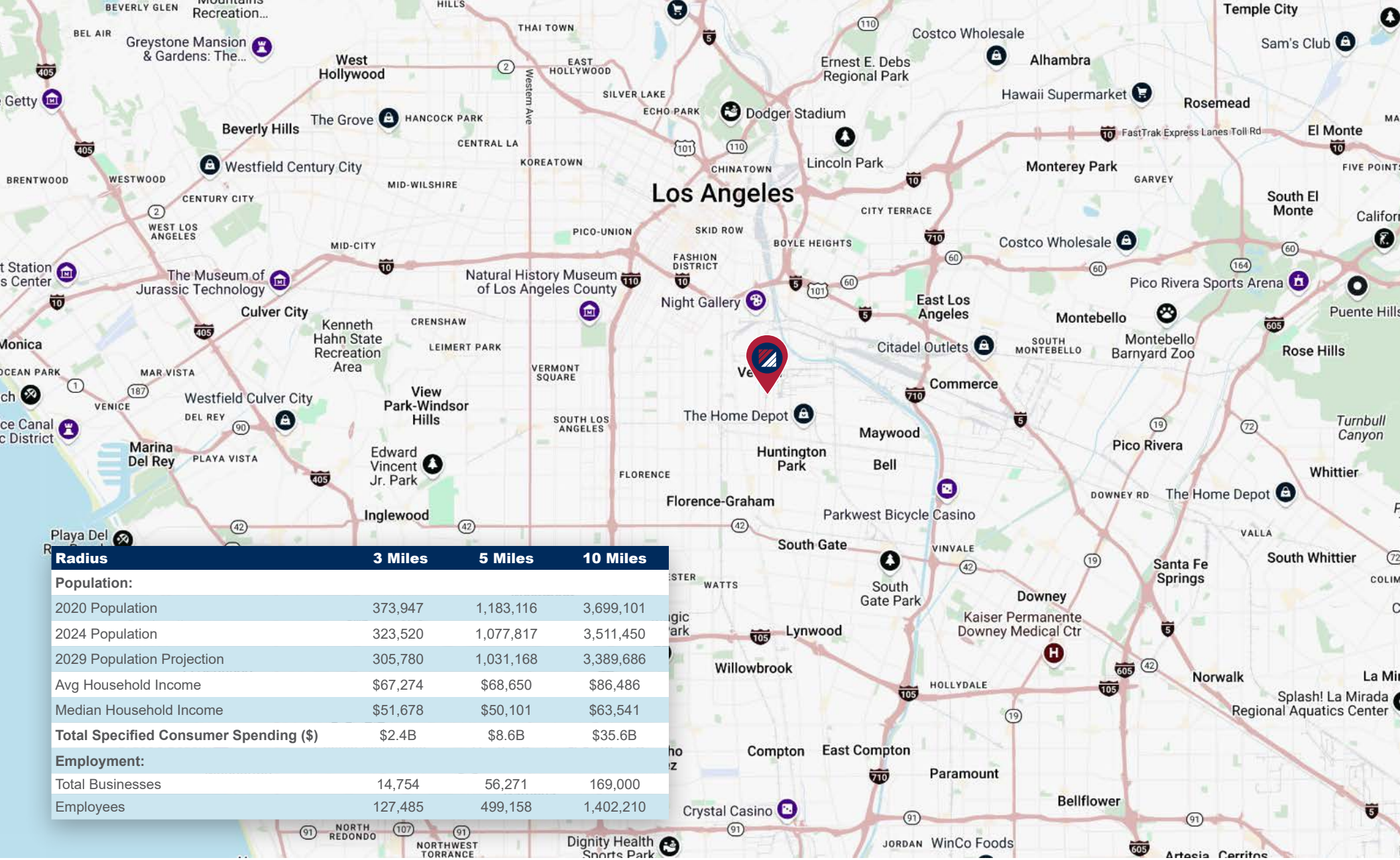
LINDSAY PARK
ASSOCIATE VICE PRESIDENT
M: 213.222.5499
lpark@daumcommercial.com
CADRE #02178941

MOON LIM
EXECUTIVE VICE PRESIDENT
P: 213.308.2056
mlim@daumcommercial.com
CADRE #01903050

INTERIOR PHOTOS

D/AQ Corp. #01129558. Maps Courtesy ©Google & ©Microsoft. Although all information is furnished regarding for sale, rental or financing is from sources deemed reliable, such information has not been verified and no express representation is made nor is any to be implied as to the accuracy thereof, and it is submitted subject to errors, omissions, changes of price, rental or other conditions, prior sale, lease or financing, or withdrawal without notice.





FOR MORE INFORMATION, CONTACT:

LINDSAY PARK
 ASSOCIATE VICE PRESIDENT
 M: 213.222.5499
 lpark@daumcommercial.com
 CADRE #02178941

MOON LIM
 EXECUTIVE VICE PRESIDENT
 P: 213.308.2056
 mlm@daumcommercial.com
 CADRE #01903050

LOCATION MAP

D/AQ Corp. #01129558. Maps Courtesy ©Google & ©Microsoft. Although all information is furnished regarding for sale, rental or financing is from sources deemed reliable, such information has not been verified and no express representation is made nor is any to be implied as to the accuracy thereof, and it is submitted subject to errors, omissions, changes of price, rental or other conditions, prior sale, lease or financing, or withdrawal without notice.



S ALAMEDA STREET



E SLAUSON AVE

E SLAUSON AVE

BELGRAVE AVE

S ATLANTIC BLVD

CITADEL OUTLETS

FOR MORE INFORMATION, CONTACT:

LINDSAY PARK
 ASSOCIATE VICE PRESIDENT
 M: 213.222.5499
 lpark@daumcommercial.com
 CADRE #02178941

MOON LIM
 EXECUTIVE VICE PRESIDENT
 P: 213.308.2056
 mlm@daumcommercial.com
 CADRE #01903050

AMENITIES MAP

D/AQ Corp. #01129558. Maps Courtesy ©Google & ©Microsoft. Although all information is furnished regarding for sale, rental or financing is from sources deemed reliable, such information has not been verified and no express representation is made nor is any to be implied as to the accuracy thereof, and it is submitted subject to errors, omissions, changes of price, rental or other conditions, prior sale, lease or financing, or withdrawal without notice.



ABOUT VERNON

The City of Vernon is an industrial city of 5.2 square miles located several miles to the southeast of Downtown Los Angeles in Southern California. Founded in 1905 as the first exclusively industrial city in the Southwestern United States, Vernon currently houses more than 1,800 businesses that employ approximately 50,000 people, serving as a vital economic engine in the region. Offering an environment uniquely friendly to business, Vernon is the home to industries including food and agriculture, apparel, steel, plastics, logistics and home furnishings. Vernon maintains strong philanthropic ties with the neighboring communities where much of its workforce lives, providing significant financial support for public services like health care and education.

<https://www.cityofvernon.org/about/about-vernon>

FOR MORE INFORMATION, CONTACT:

LINDSAY PARK
ASSOCIATE VICE PRESIDENT
M: 213.222.5499
lpark@daumcommercial.com
CADRE #02178941

MOON LIM
EXECUTIVE VICE PRESIDENT
P: 213.308.2056
mlim@daumcommercial.com
CADRE #01903050



ABOUT VERNON

D/AQ Corp. #01129558. Maps Courtesy ©Google & ©Microsoft. Although all information is furnished regarding for sale, rental or financing is from sources deemed reliable, such information has not been verified and no express representation is made nor is any to be implied as to the accuracy thereof, and it is submitted subject to errors, omissions, changes of price, rental or other conditions, prior sale, lease or financing, or withdrawal without notice.

DAUM
COMMERCIAL REAL ESTATE SERVICES