



FOR LEASE

13861 SEABOARD CIRCLE
GARDEN GROVE | CA



8,600 SF
SQUARE FEET



±2,000 SF
OFFICE SF



16'-16.5'
CLEAR HEIGHT



2 GL DOORS
(12' X 12' & 12' X 14')

CONTACT EXCLUSIVE LISTING AGENTS:

MIKE BARREIRO, SIOR
EXECUTIVE VICE PRESIDENT

P: 949.355.8500

mbarreiro@daumcre.com

CADRE #01712620



GAVIN DENNISTON
EXECUTIVE V.P. | PRINCIPAL

P: 949.242.1711

gdenniston@daumcre.com

CADRE #01837752

Although all information is furnished regarding for sale, rental or financing is from sources deemed reliable, such information has not been verified and no express representation is made nor is any to be implied as to the accuracy thereof, and it is submitted subject to errors, omissions, changes of price, rental or other conditions, prior sale, lease or financing, or withdrawal without notice.



8,600 SF INDUSTRIAL
FACILITY W/FENCED YARD

8,600 SF
INDUSTRIAL

FOR LEASE
13861 SEABOARD CIRCLE
GARDEN GROVE | CA 92843



PROPERTY FEATURES:

- ±8,600 SF Industrial Unit
- ±2,000 SF of Office
- Private Fenced Yard
- Power: 400 Amps (Verify)
- 16' to 16.5 FT Warehouse Clearance
- Two Ground Level Doors (12' x 12' & 12' x 14')
- Good Access to the 5, 22 & 57 Freeways

CONTACT EXCLUSIVE LISTING AGENTS:

MIKE BARREIRO, SIOR
EXECUTIVE VICE PRESIDENT



P: 949.355.8500
mbarreiro@daumcre.com
CADRE #01712620

GAVIN DENNISTON
EXECUTIVE V.P. | PRINCIPAL

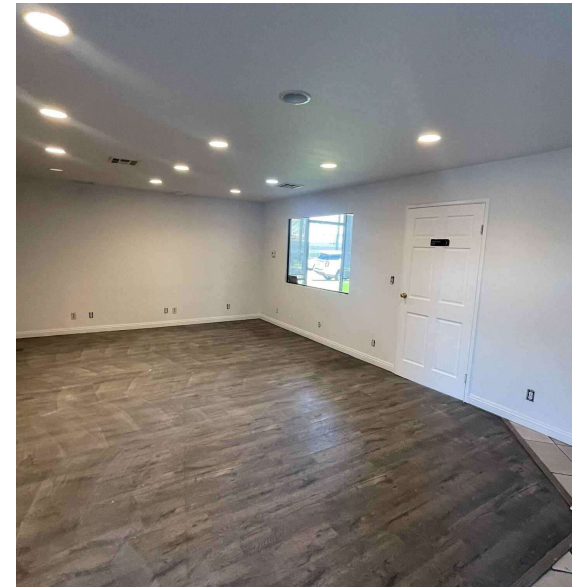
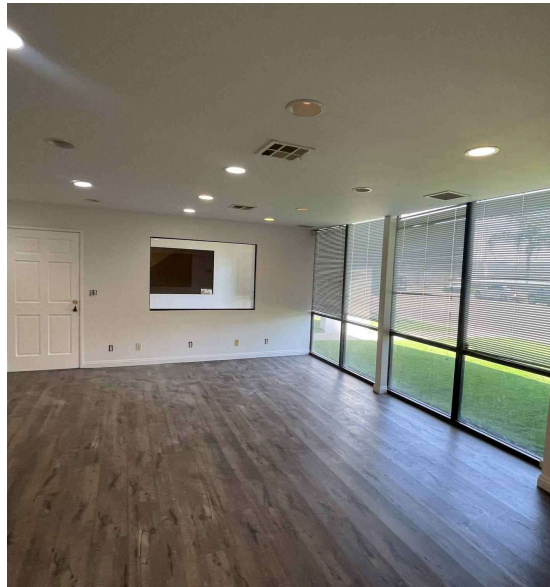
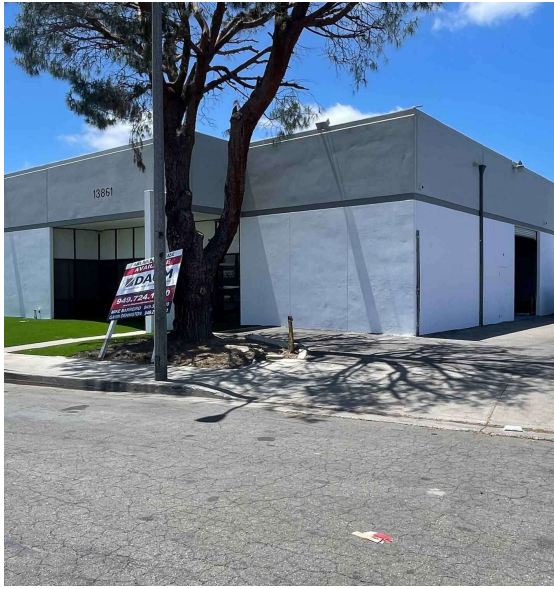
P: 949.242.1711
gdenniston@daumcre.com
CADRE #01837752

Although all information is furnished regarding for sale, rental or financing is from sources deemed reliable, such information has not been verified and no express representation is made nor is any to be implied as to the accuracy thereof, and it is submitted subject to errors, omissions, changes of price, rental or other conditions, prior sale, lease or financing, or withdrawal without notice.



8,600 SF
INDUSTRIAL

FOR LEASE
13861 SEABOARD CIRCLE
GARDEN GROVE | CA 92843



FOR MORE INFORMATION PLEASE CONTACT:

MIKE BARREIRO, SIOR
EXECUTIVE VICE PRESIDENT



P: 949.355.8500
mbarreiro@daumcre.com
CADRE #01712620

GAVIN DENNISTON
EXECUTIVE V.P. | PRINCIPAL

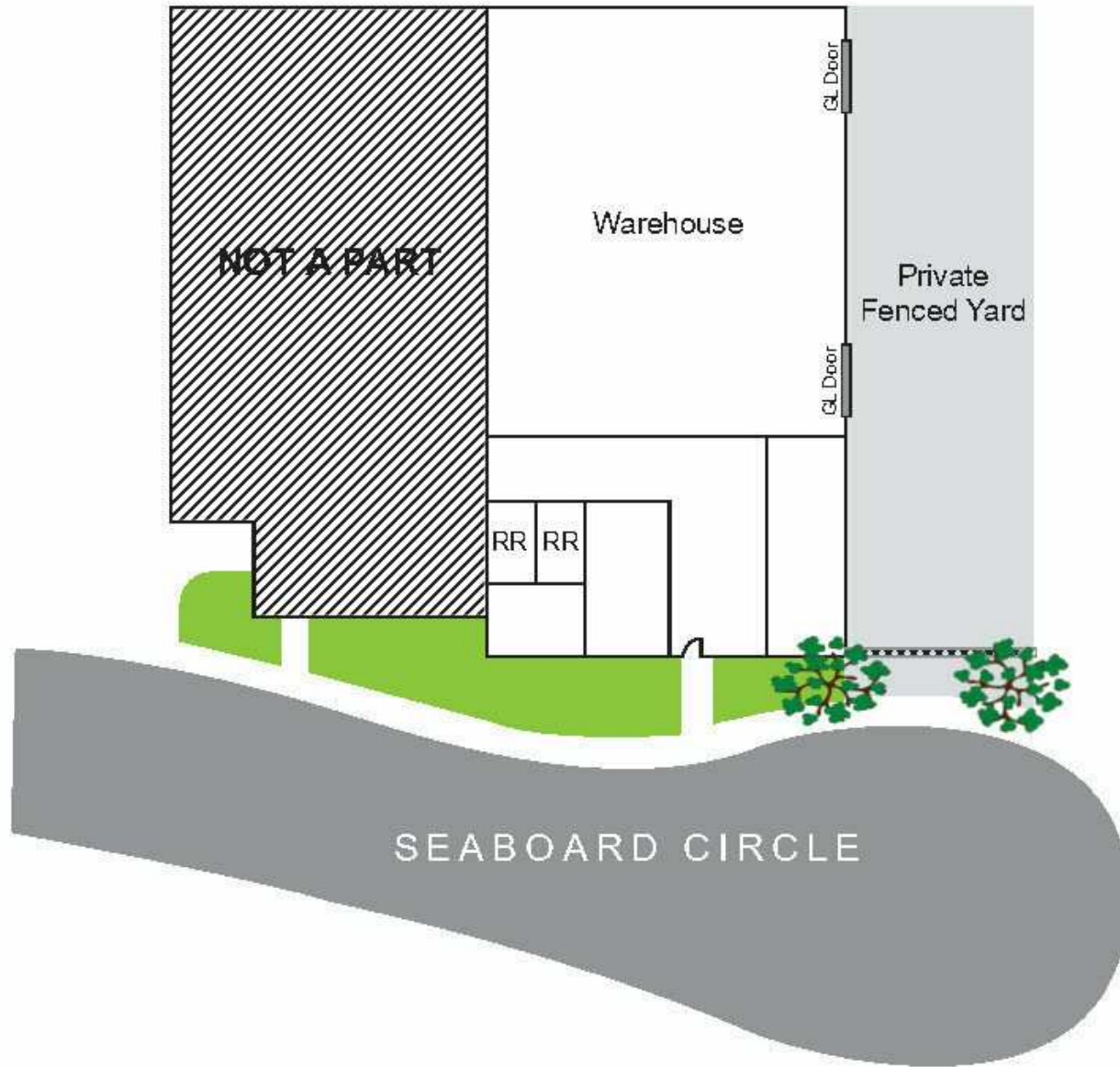
P: 949.242.1711
gdenniston@daumcre.com
CADRE #01837752

Although all information is furnished regarding for sale, rental or financing is from sources deemed reliable, such information has not been verified and no express representation is made nor is any to be implied as to the accuracy thereof, and it is submitted subject to errors, omissions, changes of price, rental or other conditions, prior sale, lease or financing, or withdrawal without notice.



8,600 SF
INDUSTRIAL

FOR LEASE
13861 SEABOARD CIRCLE
GARDEN GROVE | CA 92843



CONTACT EXCLUSIVE LISTING AGENTS:

MIKE BARREIRO, SIOR
EXECUTIVE VICE PRESIDENT



P: 949.355.8500
mbarreiro@daumcre.com
CADRE #01712620

GAVIN DENNISTON
EXECUTIVE V.P. | PRINCIPAL

P: 949.242.1711
gdenniston@daumcre.com
CADRE #01837752

Although all information is furnished regarding for sale, rental or financing is from sources deemed reliable, such information has not been verified and no express representation is made nor is any to be implied as to the accuracy thereof, and it is submitted subject to errors, omissions, changes of price, rental or other conditions, prior sale, lease or financing, or withdrawal without notice.



8,600 SF
INDUSTRIAL

FOR LEASE
13861 SEABOARD CIRCLE
GARDEN GROVE | CA 92843



CONTACT EXCLUSIVE LISTING AGENTS:

MIKE BARREIRO, SIOR
EXECUTIVE VICE PRESIDENT



P: 949.355.8500
mbarreiro@daumcre.com
CADRE #01712620

GAVIN DENNISTON
EXECUTIVE V.P. | PRINCIPAL

P: 949.242.1711
gdenniston@daumcre.com
CADRE #01837752

Although all information is furnished regarding for sale, rental or financing is from sources deemed reliable, such information has not been verified and no express representation is made nor is any to be implied as to the accuracy thereof, and it is submitted subject to errors, omissions, changes of price, rental or other conditions, prior sale, lease or financing, or withdrawal without notice.

