



FOR LEASE

15171 PIPELINE LANE
HUNTINGTON BEACH | CA

CONTACT EXCLUSIVE LISTING AGENTS:

MIKE BARREIRO, SIOR
EXECUTIVE VICE PRESIDENT

P: 949.355.8500

mbarreiro@daumcre.com

CADRE #01712620



DEVIN RAY
VICE PRESIDENT

P: 949.242.1065

dray@daumcre.com

CADRE #02018130



±5,337 SF
SQUARE FEET



NEW
IMPROVEMENTS



16.5 ft
CLEAR HEIGHT



2 Oversized
GL DOORS

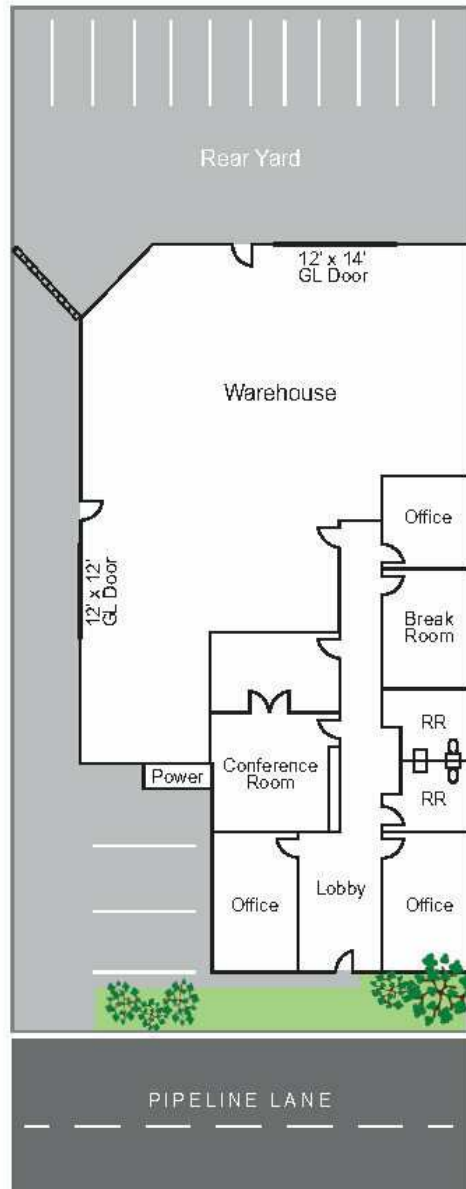
Although all information is furnished regarding for sale, rental or financing is from sources deemed reliable, such information has not been verified and no express representation is made nor is any to be implied as to the accuracy thereof, and it is submitted subject to errors, omissions, changes of price, rental or other conditions, prior sale, lease or financing, or withdrawal without notice.



±5,337 SF HIGH IMAGE
INDUSTRIAL SPACE

±5,337 SF
INDUSTRIAL

FOR LEASE
15171 PIPELINE LANE
HUNTINGTON BEACH | CA 92649



PROPERTY FEATURES:

- ±5,337 SF High Image Industrial Space
- Two Oversized GL Doors (12' x 12' & 12' x 14')
- 16' 5 FT Clear Height
- New Improvements
- Power: 400 Amps, 277/480 Volt (Verify Power)
- Rear Yard
- Warehouse Skylights

CONTACT EXCLUSIVE LISTING AGENTS:

MIKE BARREIRO, SIOR
EXECUTIVE VICE PRESIDENT



P: 949.355.8500
mbarreiro@daumcre.com
CADRE #01712620

DEVIN RAY
VICE PRESIDENT



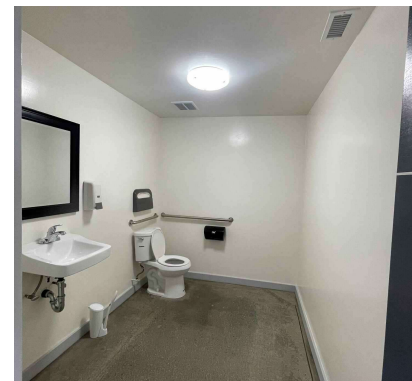
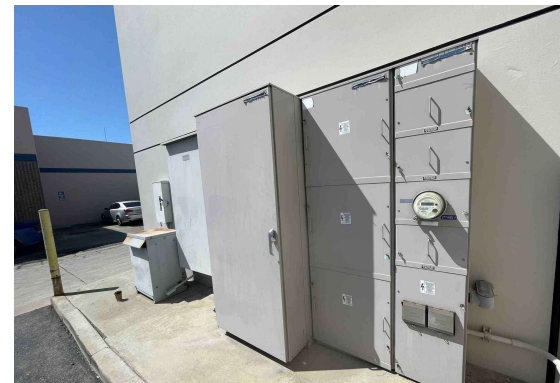
P: 949.242.1065
dray@daumcre.com
CADRE #02018130

Although all information is furnished regarding for sale, rental or financing is from sources deemed reliable, such information has not been verified and no express representation is made nor is any to be implied as to the accuracy thereof, and it is submitted subject to errors, omissions, changes of price, rental or other conditions, prior sale, lease or financing, or withdrawal without notice.



±5,337 SF
INDUSTRIAL

FOR LEASE
15171 PIPELINE LANE
HUNTINGTON BEACH | CA 92649



CONTACT EXCLUSIVE LISTING AGENTS:

MIKE BARREIRO, SIOR
EXECUTIVE VICE PRESIDENT



P: 949.355.8500
mbarreiro@daumcre.com
CADRE #01712620

DEVIN RAY
VICE PRESIDENT



P: 949.242.1065
dray@daumcre.com
CADRE #02018130

Although all information is furnished regarding for sale, rental or financing is from sources deemed reliable, such information has not been verified and no express representation is made nor is any to be implied as to the accuracy thereof, and it is submitted subject to errors, omissions, changes of price, rental or other conditions, prior sale, lease or financing, or withdrawal without notice.

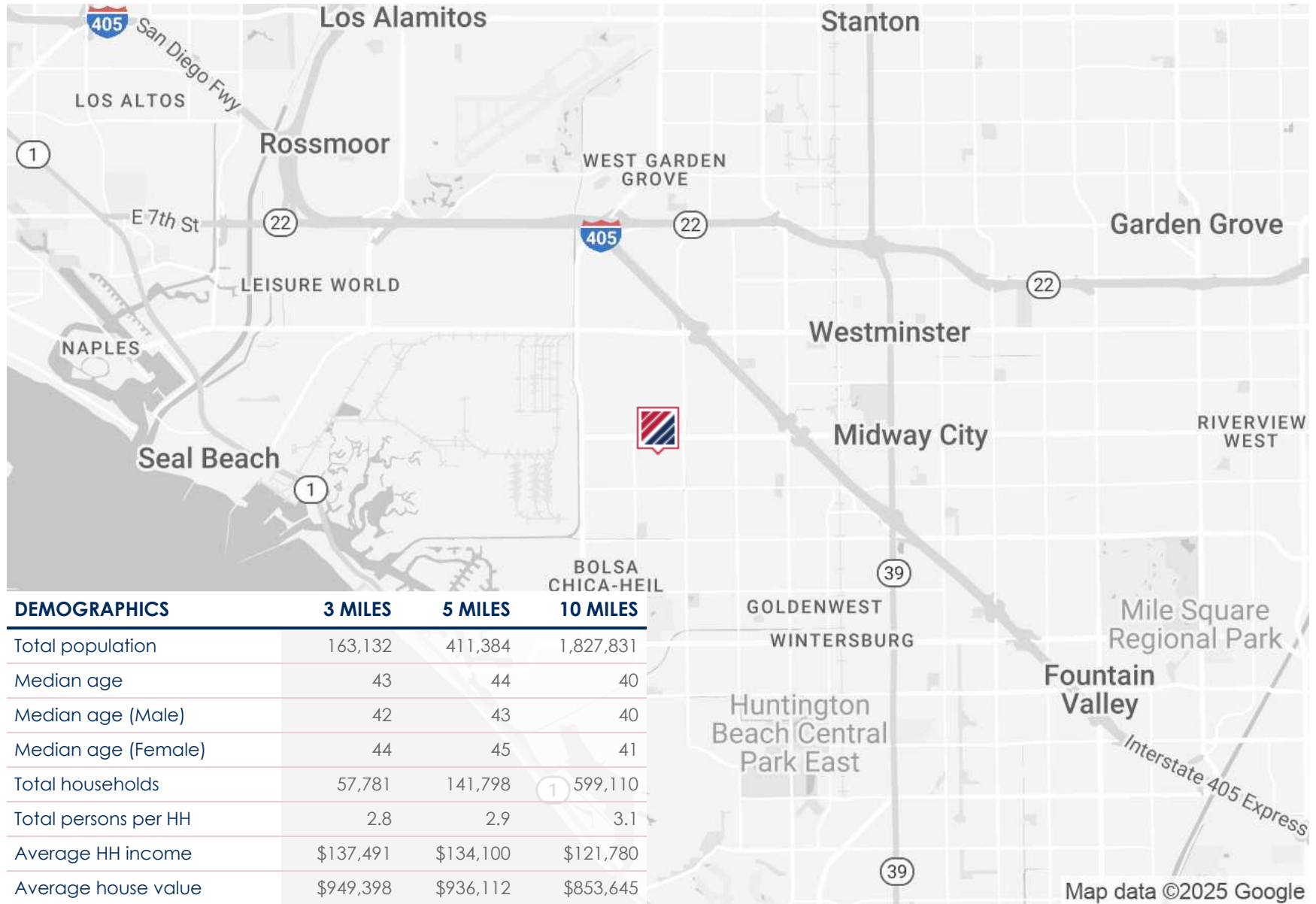


±5,337 SF
INDUSTRIAL

FOR LEASE

15171 PIPELINE LANE

HUNTINGTON BEACH | CA 92649



CONTACT EXCLUSIVE LISTING AGENTS:

MIKE BARREIRO, SIOR
EXECUTIVE VICE PRESIDENT



P: 949.355.8500
mbarreiro@daumcre.com
CADRE #01712620

DEVIN RAY
VICE PRESIDENT



P: 949.242.1065
dray@daumcre.com
CADRE #02018130

Although all information is furnished regarding for sale, rental or financing is from sources deemed reliable, such information has not been verified and no express representation is made nor is any to be implied as to the accuracy thereof, and it is submitted subject to errors, omissions, changes of price, rental or other conditions, prior sale, lease or financing, or withdrawal without notice.

