



# FOR SUBLEASE

± 5,598 SF

# 6160 S. EASTERN AVENUE

Commerce, CA 90040

## EXCLUSIVE LISTING TEAM:

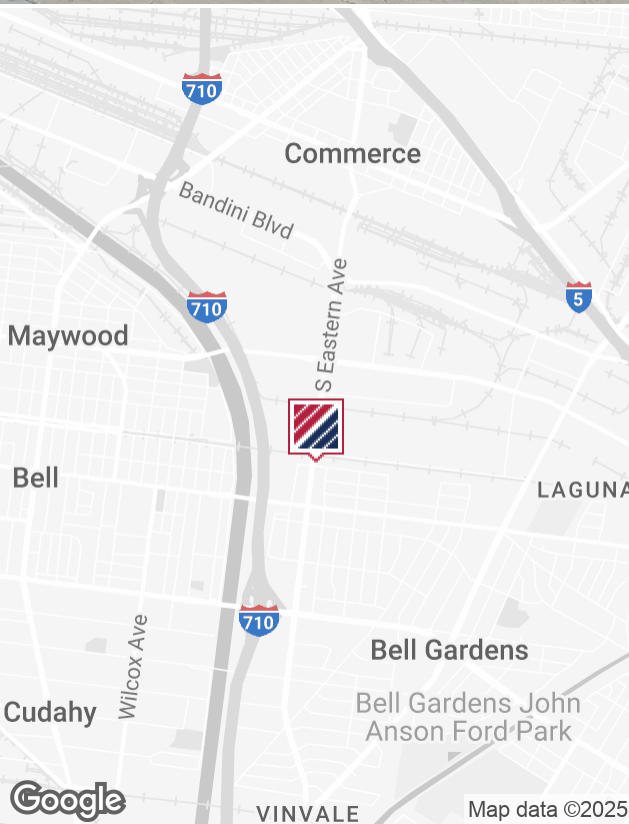
David Muir  
Executive Vice President  
P: 213.270.2244  
david.muir@daumcommercial.com  
CADRE #01210653

Ryan Zurcher  
Associate  
P: 213.270.2268 | M: 714.651.9068  
ryan.zurcher@daumcommercial.com  
CADRE #02238179

Although all information is furnished regarding for sale, rental or financing is from sources deemed reliable, such information has not been verified and no express representation is made nor is any to be implied as to the accuracy thereof, and it is submitted subject to errors, omissions, changes of price, rental or other conditions, prior sale, lease or financing, or withdrawal without notice.







# PROPERTY INFO 6160 S. EASTERN AVENUE

Industrial Property |  $\pm$  5,598 SF

## Features

- Multi-Tenant Business Park
- Close To 5 & 710 Freeways
- Dock High Loading
- Sublease expires May 31, 2026
- Bonus Rear Storage Area
- Longer Term Available



5,598 SF  
AVAILABLE



800 SF  
OFFICE SPACE



14 ft  
CLEAR HEIGHT



6  
PARKING SPACES

## EXCLUSIVE LISTING TEAM:

David Muir  
Executive Vice President  
P: 213.270.2244  
david.muir@daumcommercial.com  
CADRE #01210653

Ryan Zurcher  
Associate  
P: 213.270.2268 | M: 714.651.9068  
ryan.zurcher@daumcommercial.com  
CADRE #02238179

Although all information is furnished regarding for sale, rental or financing is from sources deemed reliable, such information has not been verified and no express representation is made nor is any to be implied as to the accuracy thereof, and it is submitted subject to errors, omissions, changes of price, rental or other conditions, prior sale, lease or financing, or withdrawal without notice.



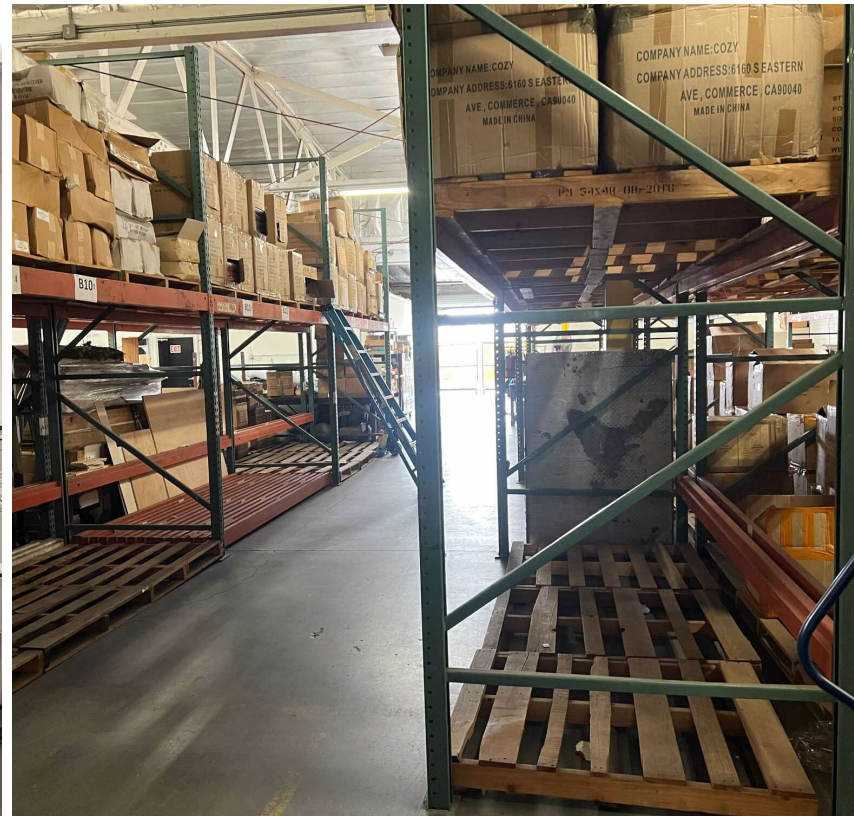


# 6160 S. EASTERN AVENUE

Industrial Unit | ± 5,598 SF

Although all information is furnished regarding for sale, rental or financing is from sources deemed reliable, such information has not been verified and no express representation is made nor is any to be implied as to the accuracy thereof, and it is submitted subject to errors, omissions, changes of price, rental or other conditions, prior sale, lease or financing, or withdrawal without notice.

**DAUM**  
COMMERCIAL REAL ESTATE SERVICES

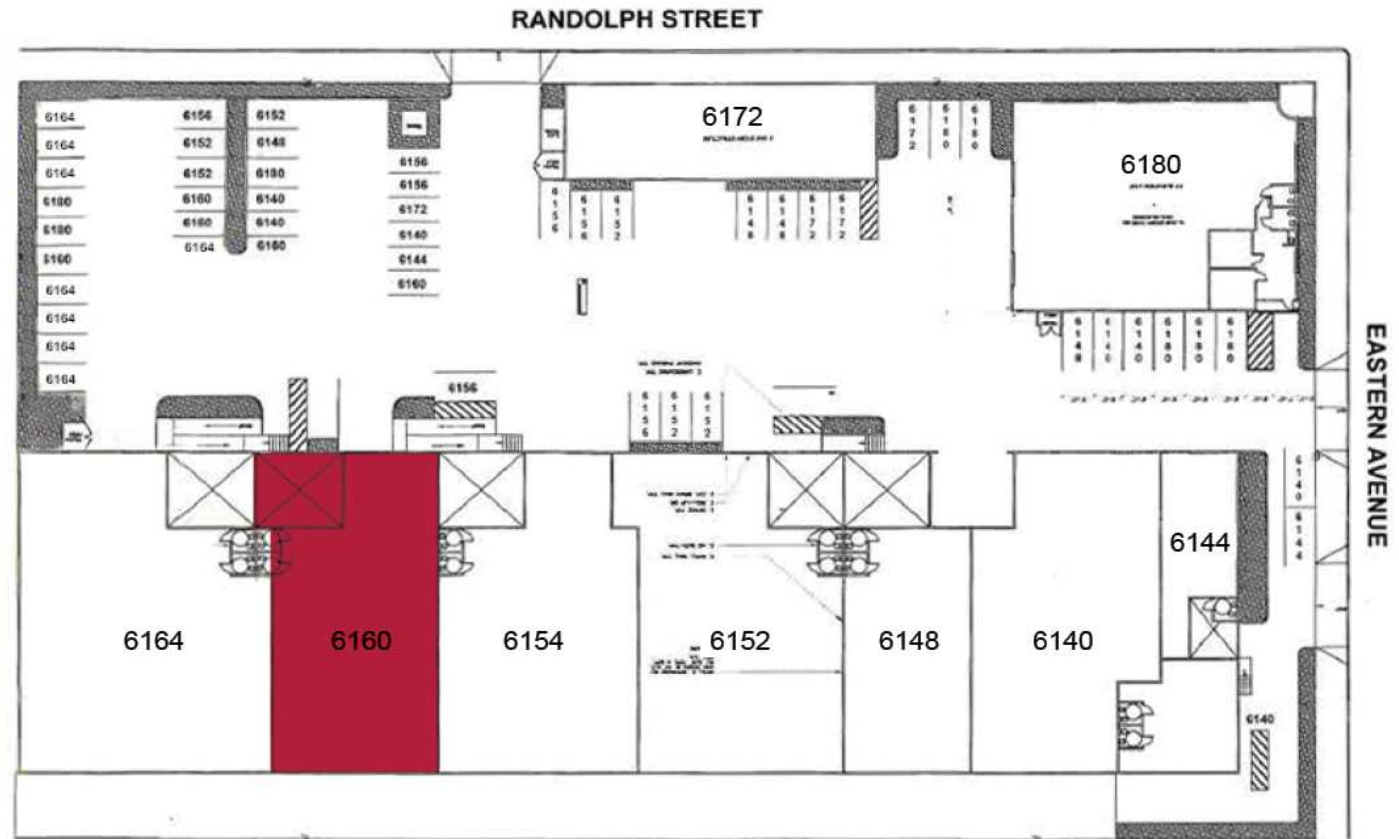




# 6160 S. EASTERN AVENUE

Industrial Unit | ± 5,598 SF

## SITE PLAN



Not to scale. Does not constitute a representation or warranty regarding the Project or any portion thereof, and Landlord reserves the right to modify any portion of the Project in its sole discretion as provided in the Lease.

### EXCLUSIVE LISTING TEAM:

David Muir  
Executive Vice President  
P: 213.270.2244  
david.muir@daumcommercial.com  
CADRE #01210653

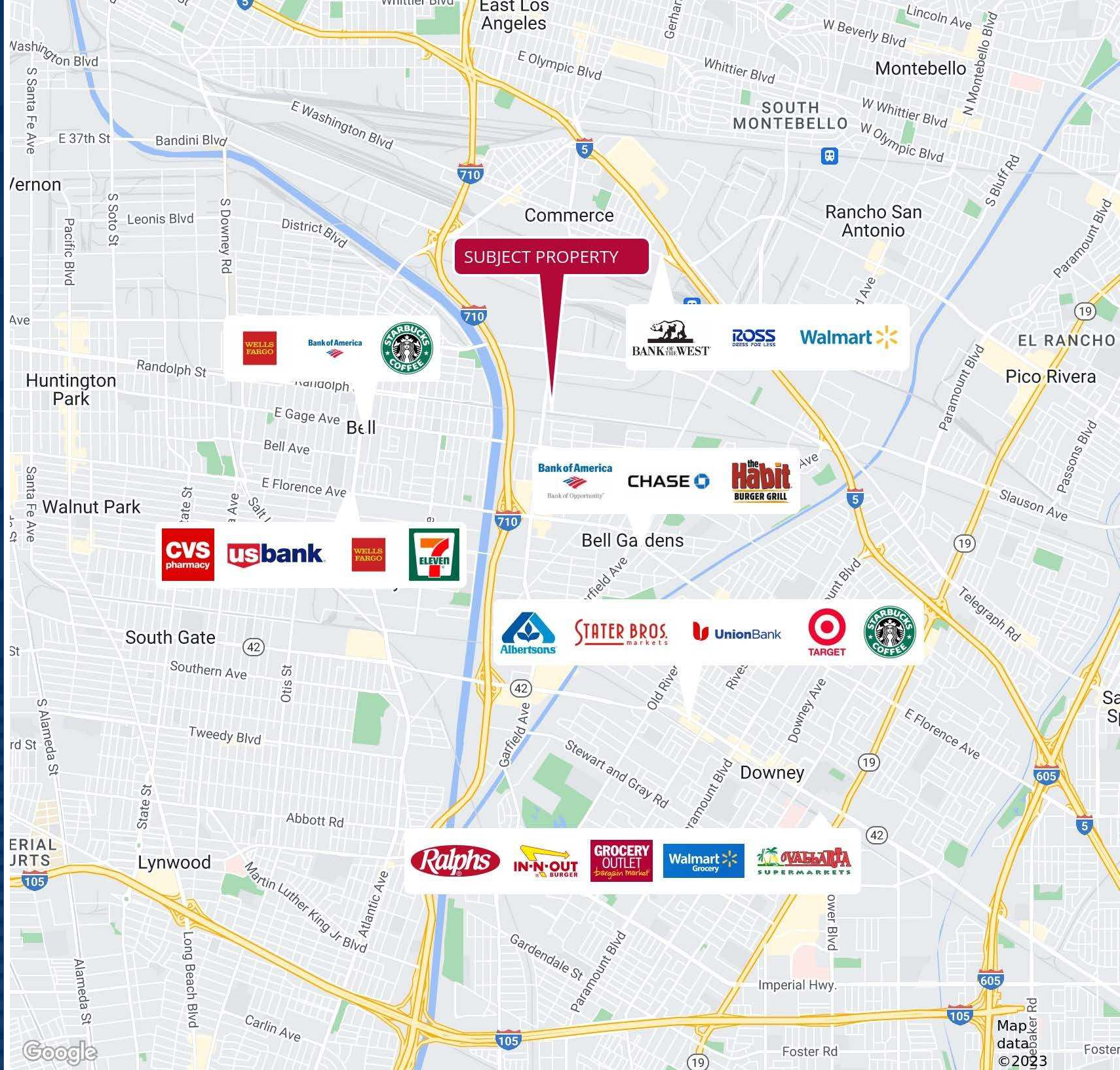
Ryan Zurcher  
Associate  
P: 213.270.2268 | M: 714.651.9068  
ryan.zurcher@daumcommercial.com  
CADRE #02238179



Industrial Unit |  $\pm 5,598$  SF



**DAUM**  
COMMERCIAL REAL ESTATE SERVICES





6160 S. EASTERN AVENUE

Industrial Unit | ± 5,598 SF

Although all information is furnished regarding for sale, rental or financing is from sources deemed reliable, such information has not been verified and no express representation is made nor is any to be implied as to the accuracy thereof, and it is submitted subject to errors, omissions, changes of price, rental or other conditions, prior sale, lease or financing, or withdrawal without notice.



## DEMOGRAPHICS

### COMMERCE 2024

**100,117** **26,069** **\$67,129**  
PEOPLE HOUSEHOLDS AVG HH INCOME  
2 MILES 2 MILES 2 MILES

### COMMERCE 2029

**94,011** **24,406**  
PEOPLE HOUSING UNITS

### CONSUMER SPENDING

**\$796,037,878**  
CONSUMER SPENDING  
2 MILES | 2029



**\$778,539,680**  
CONSUMER SPENDING  
2 MILES | 2024



### EXCLUSIVE LISTING TEAM:

David Muir  
Executive Vice President  
P: 213.270.2244  
david.muir@daumcommercial.com  
CADRE #01210653

Ryan Zurcher  
Associate  
P: 213.270.2268 | M: 714.651.9068  
ryan.zurcher@daumcommercial.com  
CADRE #02238179