



FOR LEASE

±5,494 SF INDUSTRIAL BUILDING

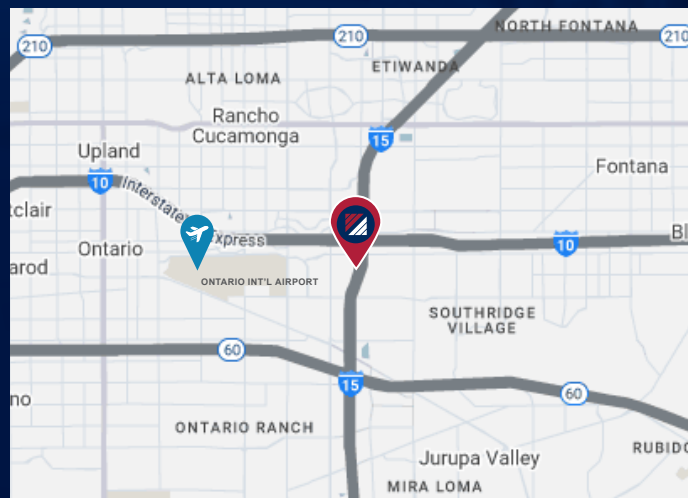
720 S. ROCHESTER AVE. | UNIT D | ONTARIO | CA

PROPERTY DESCRIPTION

- ±5,494 SF Total Building Size
- ±4,468 SF Office Space
- ±1,026 SF Warehouse
- One (1) Ground Level Loading
- 2003 Year Built
- 17' Clear Height
- 200 Amps (Verify)
- Light Industrial Zoning
- .33/3,000 Sprinklered

PROPERTY HIGHLIGHTS

- High-Image Industrial/ Flex space
- Immediate Freeway Access to 15, 10 & 60 Freeways
- Professionally Managed Business Park
- Ample On-Site Parking
- Close Proximity to Retail Amenities



FOR MORE INFORMATION, PLEASE CONTACT:

NOAH SAMARIN

EXECUTIVE V.P. | PRINCIPAL
M: 714.812.1289
nsamarin@daumcommercial.com
CADRE #01755814

DAVID GORES

FIRST VICE PRESIDENT
M: 909.720.9437
dgores@daumcommercial.com
CADRE #01502471

NICK CANTU

ASSOCIATE VICE PRESIDENT
M: 714.787.9454
ncantu@daumcommercial.com
CADRE #02016719

Although all information is furnished regarding for sale, rental or financing from sources deemed reliable, such information has not been verified and no express representation is made nor is any to be implied as to the accuracy thereof, and it is submitted subject to errors, omissions, changes of price, rental or other conditions, prior sale, lease or financing, or withdrawal without notice. All Maps provided courtesy of Google Maps, Bing Maps, and Google Earth. D/AQ Corp. # 01129558



FOR LEASE

±5,494 SF INDUSTRIAL BUILDING

720 S. ROCHESTER AVE. | UNIT D | ONTARIO | CA

PHOTOS



FOR MORE INFORMATION, PLEASE CONTACT:

NOAH SAMARIN

EXECUTIVE V.P. | PRINCIPAL
M: 714.812.1289
nsamarin@daumcommercial.com
CADRE #01755814

DAVID GORES

FIRST VICE PRESIDENT
M: 909.720.9437
dgores@daumcommercial.com
CADRE #01502471

NICK CANTU

ASSOCIATE VICE PRESIDENT
M: 714.787.9454
ncantu@daumcommercial.com
CADRE #02016719

Although all information is furnished regarding for sale, rental or financing from sources deemed reliable, such information has not been verified and no express representation is made nor is any to be implied as to the accuracy thereof, and it is submitted subject to errors, omissions, changes of price, rental or other conditions, prior sale, lease or financing, or withdrawal without notice. All Maps provided courtesy of Google Maps, Bing Maps, and Google Earth. D/AQ Corp. # 01129558

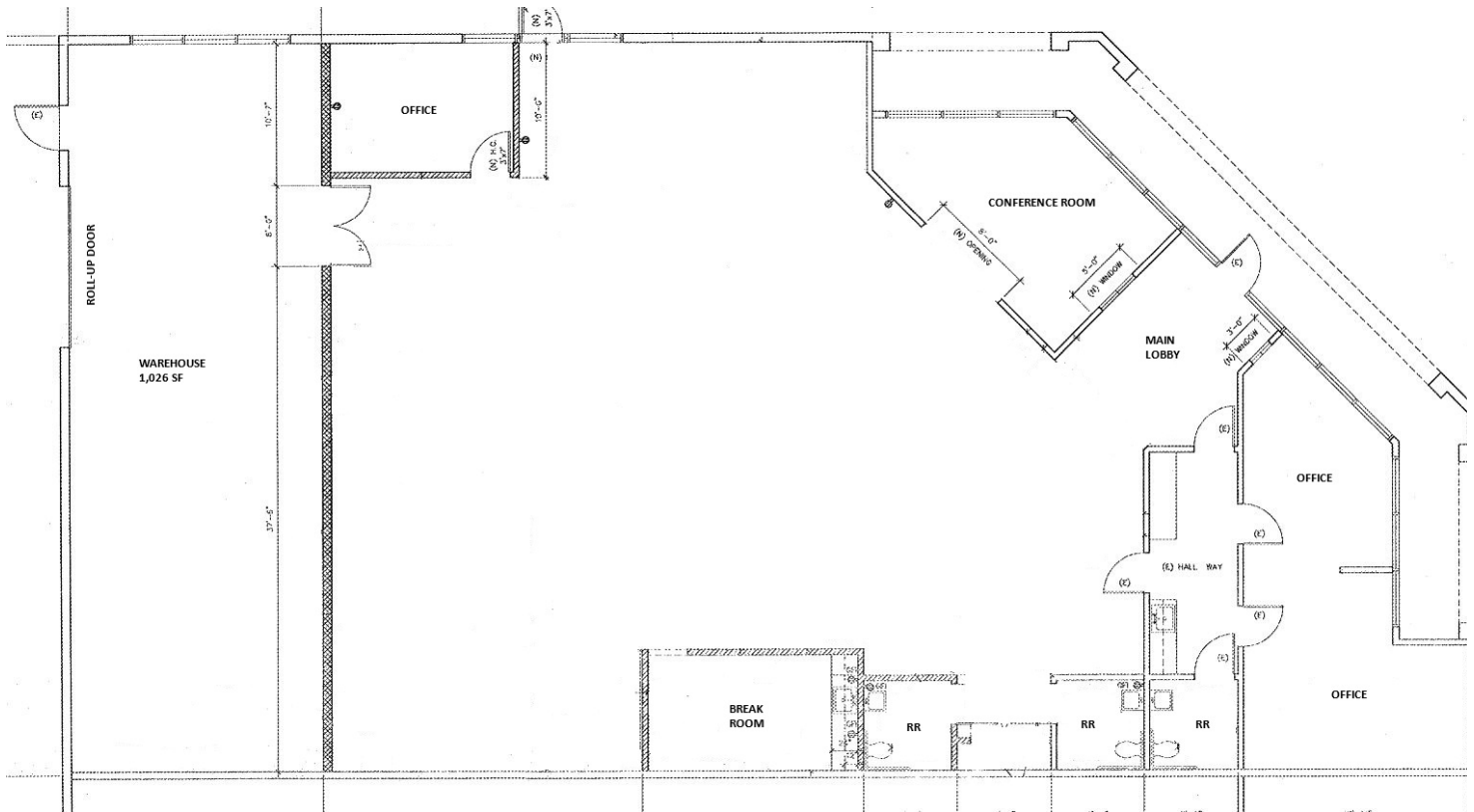


FOR LEASE

±5,494 SF INDUSTRIAL BUILDING

720 S. ROCHESTER AVE. | UNIT D | ONTARIO | CA

SITE PLAN



***NOT TO SCALE**

FOR MORE INFORMATION, PLEASE CONTACT:

NOAH SAMARIN

EXECUTIVE V.P. | PRINCIPAL
M: 714.812.1289
nsamarin@daumcommercial.com
CADRE #01755814

DAVID GORES

FIRST VICE PRESIDENT
M: 909.720.9437
dgores@daumcommercial.com
CADRE #01502471

NICK CANTU

ASSOCIATE VICE PRESIDENT
M: 714.787.9454
ncantu@daumcommercial.com
CADRE #02016719

Although all information is furnished regarding for sale, rental or financing from sources deemed reliable, such information has not been verified and no express representation is made nor is any to be implied as to the accuracy thereof, and it is submitted subject to errors, omissions, changes of price, rental or other conditions, prior sale, lease or financing, or withdrawal without notice. All Maps provided courtesy of Google Maps, Bing Maps, and Google Earth. D/AQ Corp. # 01129558

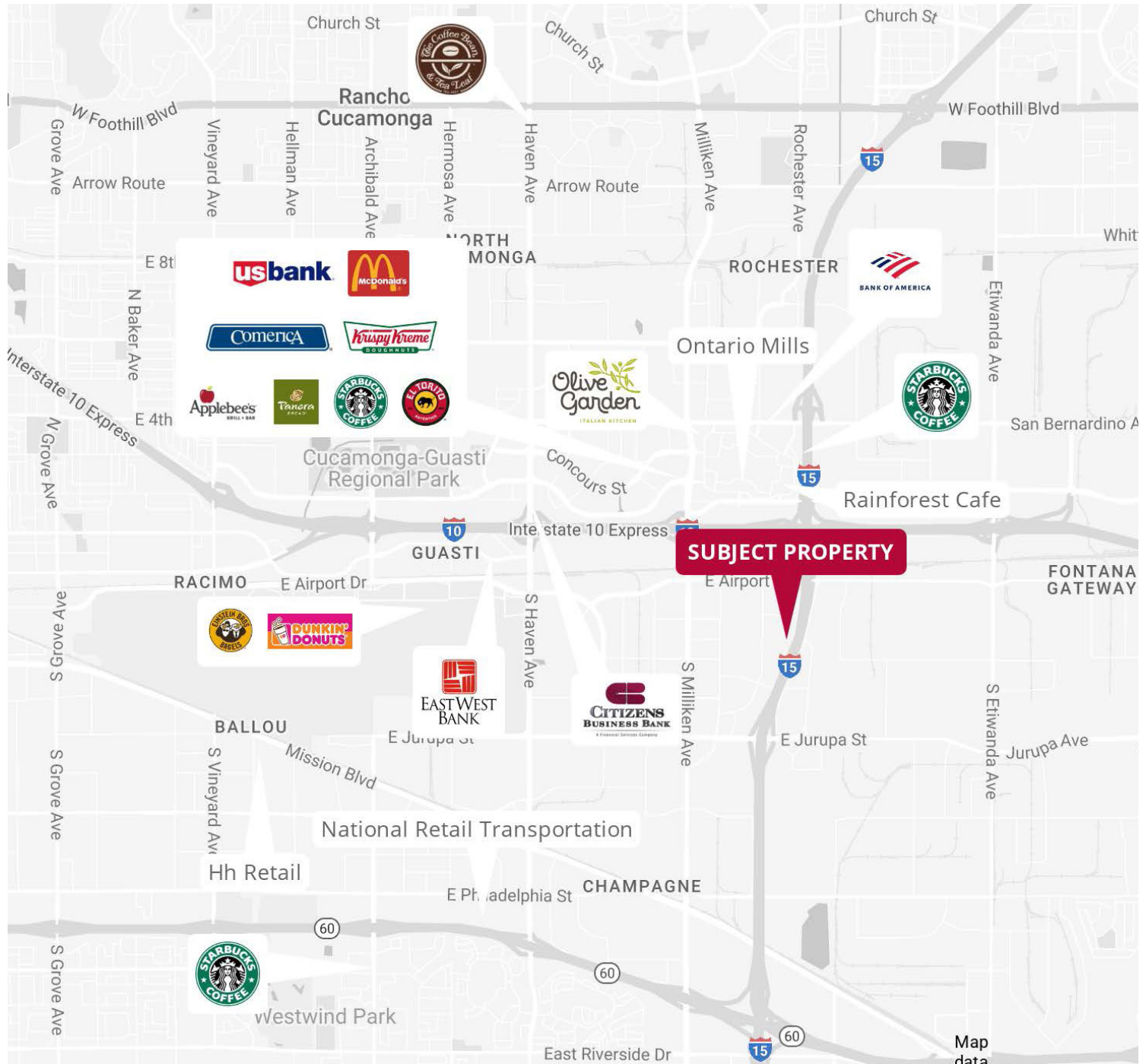


FOR LEASE

±5,494 SF INDUSTRIAL BUILDING

720 S. ROCHESTER AVE. | UNIT D | ONTARIO | CA

**AMENITIES &
AERIAL MAP**



FOR MORE INFORMATION, PLEASE CONTACT:

NOAH SAMARIN

EXECUTIVE V.P. | PRINCIPAL
M: 714.812.1289
nsamarin@daumcommercial.com
CADRE #01755814

DAVID GORES

FIRST VICE PRESIDENT
M: 909.720.9437
dgores@daumcommercial.com
CADRE #01502471

NICK CANTU

ASSOCIATE VICE PRESIDENT
M: 714.787.9454
ncantu@daumcommercial.com
CADRE #02016719

Although all information is furnished regarding for sale, rental or financing from sources deemed reliable, such information has not been verified and no express representation is made nor is any to be implied as to the accuracy thereof, and it is submitted subject to errors, omissions, changes of price, rental or other conditions, prior sale, lease or financing, or withdrawal without notice. All Maps provided courtesy of Google Maps, Bing Maps, and Google Earth. D/AQ Corp. # 01129558

DAUM
COMMERCIAL REAL ESTATE SERVICES

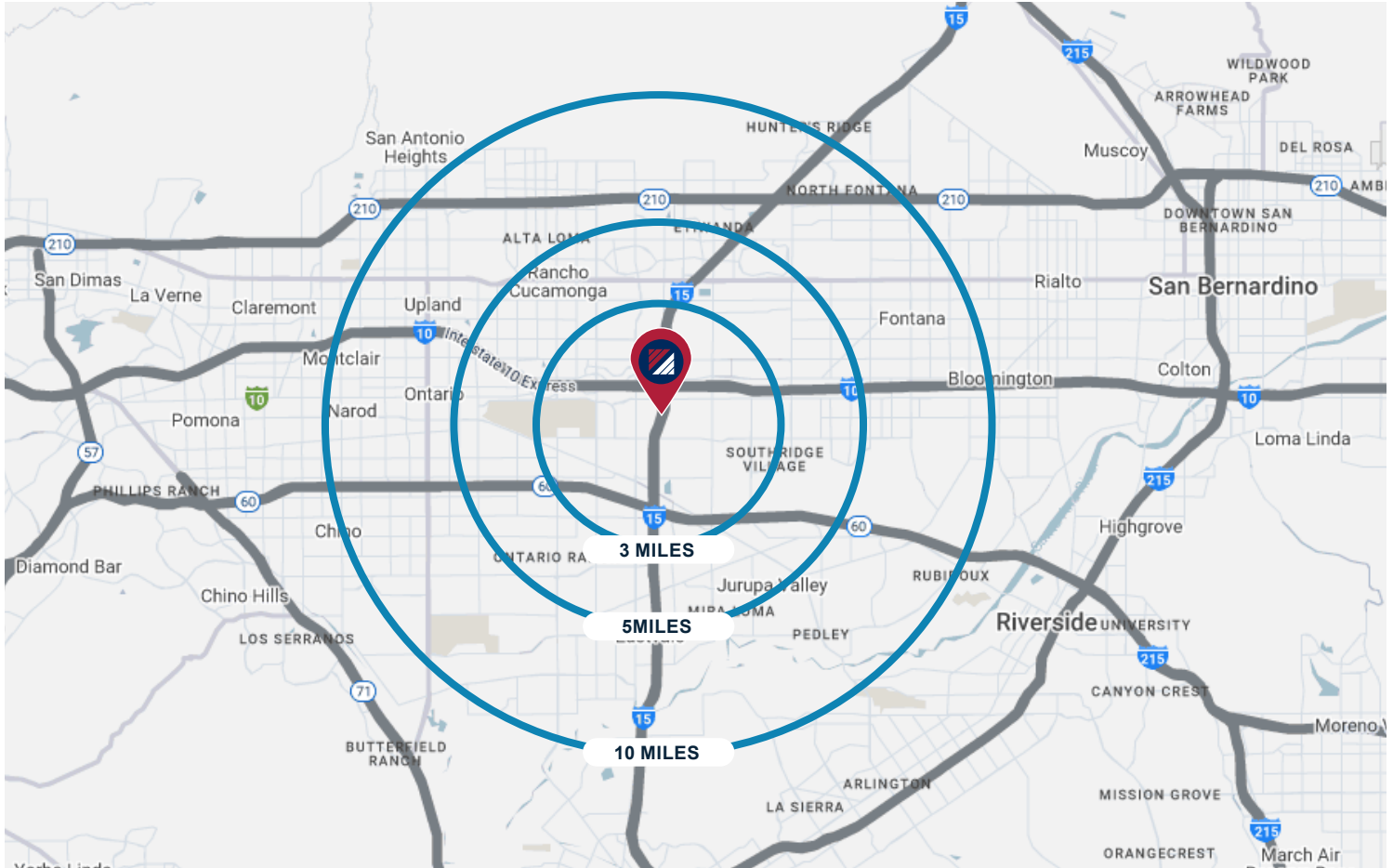
SGC INDUSTRIAL TEAM

FOR LEASE

±5,494 SF INDUSTRIAL BUILDING

720 S. ROCHESTER AVE. | UNIT D | ONTARIO | CA

DEMOGRAPHICS & TRAFFIC COUNT



TRAFFIC COUNT

COLLECTION STREET	CROSS STREET	TRAFFIC VOLUME	COUNT YEAR	DISTANCE FROM PROPERTY
I- 15	E Airport Dr N	235,523	2025	0.12 mi
E Airport Dr	S Rochester Ave E	13,273	2025	0.34 mi
Santa Ana St	Sarah Pl E	2,227	2025	0.49 mi

*Traffic Count data derived from Costar

FOR MORE INFORMATION, PLEASE CONTACT:

NOAH SAMARIN

EXECUTIVE V.P. | PRINCIPAL
M: 714.812.1289
nsamarin@daumcommercial.com
CADRE #01755814

DAVID GORES

FIRST VICE PRESIDENT
M: 909.720.9437
dgores@daumcommercial.com
CADRE #01502471

NICK CANTU

ASSOCIATE VICE PRESIDENT
M: 714.787.9454
ncantu@daumcommercial.com
CADRE #02016719

Although all information is furnished regarding for sale, rental or financing from sources deemed reliable, such information has not been verified and no express representation is made nor is any to be implied as to the accuracy thereof, and it is submitted subject to errors, omissions, changes of price, rental or other conditions, prior sale, lease or financing, or withdrawal without notice. All Maps provided courtesy of Google Maps, Bing Maps, and Google Earth. D/AQ Corp. # 01129558

