



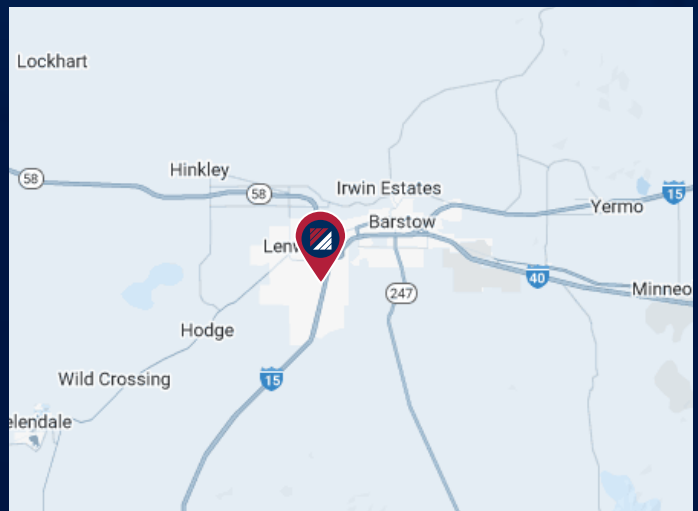
FOR LEASE

±23,556 SF TRUCK REPAIR FACILITY

2591 LENWOOD DR. | BARSTOW | CA

PROPERTY HIGHLIGHTS

- ±23,556 SF Part of Larger Building
- Truck Repair Facility
- 14 Drive In Truck Doors
- 2 In Ground Repair Pits
- 2 Tool Room(s)
- 2 – Story Office
- 1st Floor Showroom, Service Counter, Locker Room, 2 Restrooms, and Customer Waiting Area



FOR MORE INFORMATION, PLEASE CONTACT:

NOAH SAMARIN

EXECUTIVE V.P. | PRINCIPAL

M: 714.812.1289

nsamarin@daumcommercial.com

CADRE #01755814

TIM TANG

INDUSTRIAL REAL ESTATE

D: 949.648.1650 | M: 909.834.8777

ttang@wetrustrealty.com

Lic. #02237441

WeTrust Realty#: 02125613



WeTrust Realty

Although all information is furnished regarding for sale, rental or financing from sources deemed reliable, such information has not been verified and no express representation is made nor is any to be implied as to the accuracy thereof, and it is submitted subject to errors, omissions, changes of price, rental or other conditions, prior sale, lease or financing, or withdrawal without notice. All Maps provided courtesy of Google Maps, Bing Maps, and Google Earth. D/AQ Corp. # 01129558

FOR LEASE

±23,556 SF TRUCK REPAIR FACILITY

PHOTOS

2591 LENWOOD DR. | BARSTOW | CA



FOR MORE INFORMATION, PLEASE CONTACT:

NOAH SAMARIN
EXECUTIVE V.P. | PRINCIPAL
M: 714.812.1289
nsamarin@daumcommercial.com
CADRE #01755814

TIM TANG
INDUSTRIAL REAL ESTATE
D: 949.648.1650 | M: 909.834.8777
ttang@wetrustrealty.com
Lic. #02237441
WeTrust Realty#: 02125613

DAUM
COMMERCIAL REAL ESTATE SERVICES

SGC INDUSTRIAL TEAM

WeTrust Realty

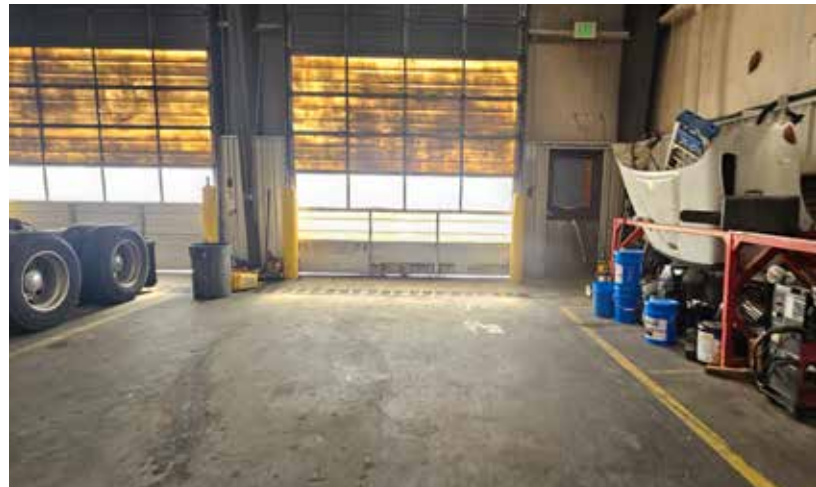
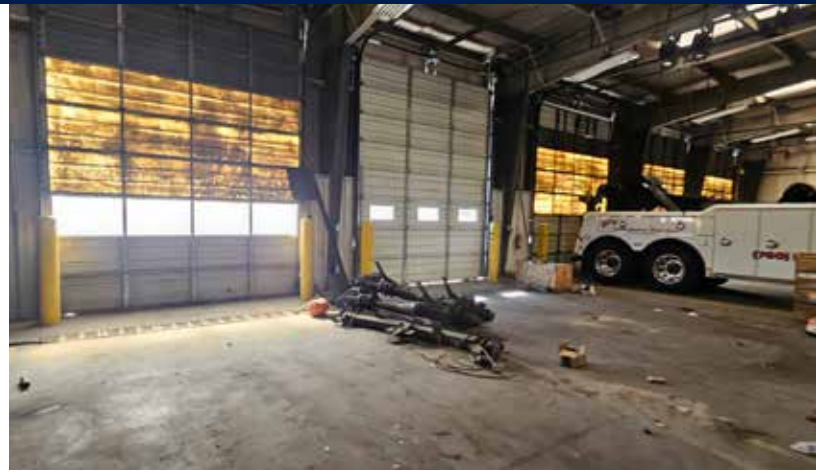
Although all information is furnished regarding for sale, rental or financing from sources deemed reliable, such information has not been verified and no express representation is made nor is any to be implied as to the accuracy thereof, and it is submitted subject to errors, omissions, changes of price, rental or other conditions, prior sale, lease or financing, or withdrawal without notice. All Maps provided courtesy of Google Maps, Bing Maps, and Google Earth. D/AQ Corp. # 01129558

FOR LEASE

±23,556 SF TRUCK REPAIR FACILITY

PHOTOS

2591 LENWOOD DR. | BARSTOW | CA



FOR MORE INFORMATION, PLEASE CONTACT:

NOAH SAMARIN
EXECUTIVE V.P. | PRINCIPAL
M: 714.812.1289
nsamarin@daumcommercial.com
CADRE #01755814

TIM TANG
INDUSTRIAL REAL ESTATE
D: 949.648.1650 | M: 909.834.8777
ttang@wetrustrealty.com
Lic. #02237441
WeTrust Realty#: 02125613

DAUM
COMMERCIAL REAL ESTATE SERVICES

SGC INDUSTRIAL TEAM

WeTrust Realty

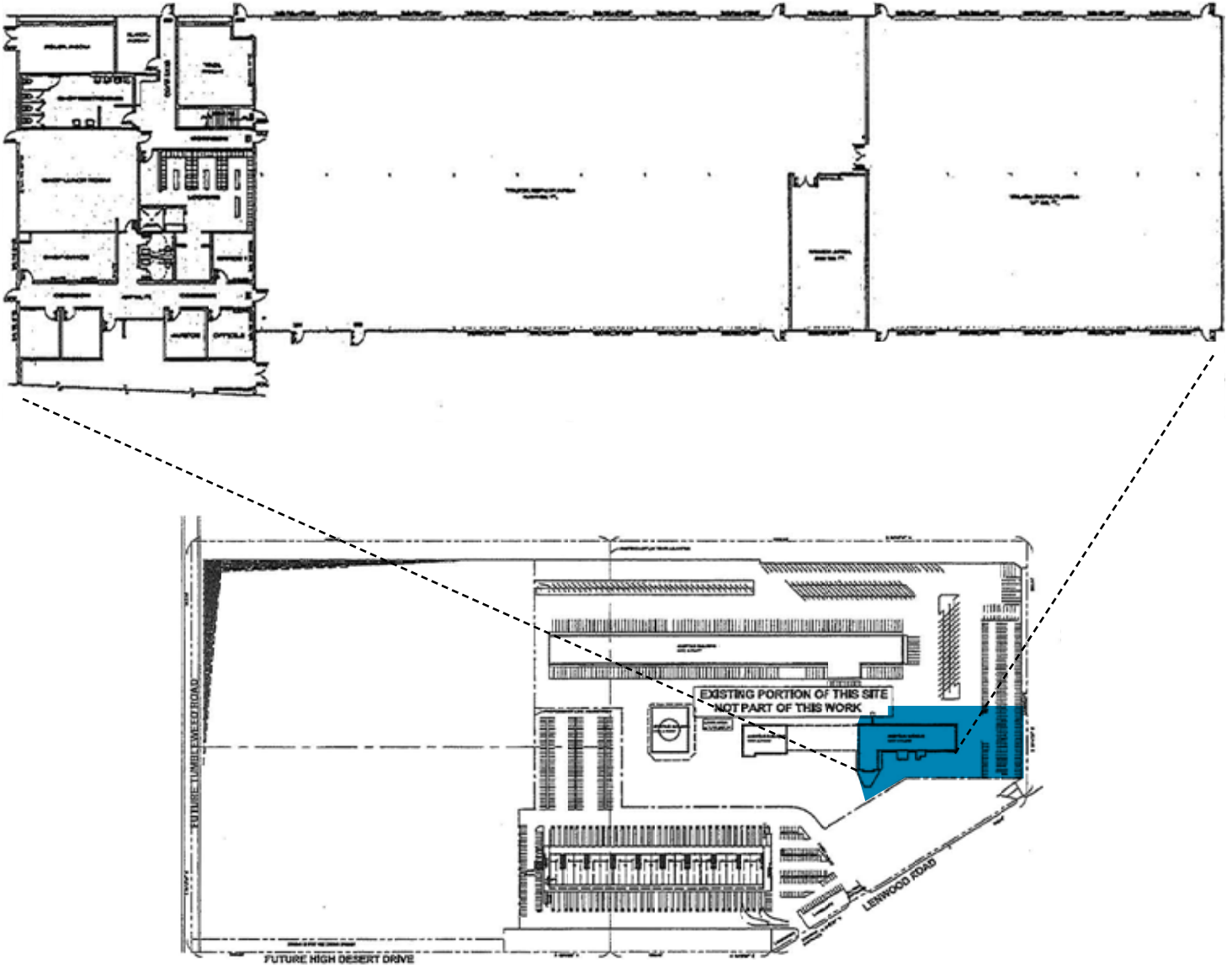
Although all information is furnished regarding for sale, rental or financing from sources deemed reliable, such information has not been verified and no express representation is made nor is any to be implied as to the accuracy thereof, and it is submitted subject to errors, omissions, changes of price, rental or other conditions, prior sale, lease or financing, or withdrawal without notice. All Maps provided courtesy of Google Maps, Bing Maps, and Google Earth. D/AQ Corp. # 01129558

FOR LEASE

±23,556 SF TRUCK REPAIR FACILITY

FLOOR PLAN & SITE PLAN

2591 LENWOOD DR. | BARSTOW | CA



FOR MORE INFORMATION, PLEASE CONTACT:

NOAH SAMARIN

EXECUTIVE V.P. | PRINCIPAL

M: 714.812.1289

nsamarin@daumcommercial.com

CADRE #01755814

TIM TANG

INDUSTRIAL REAL ESTATE

D: 949.648.1650 | M: 909.834.8777

ttang@wetrustrealty.com

Lic. #02237441

WeTrust Realty#: 02125613



WeTrust Realty

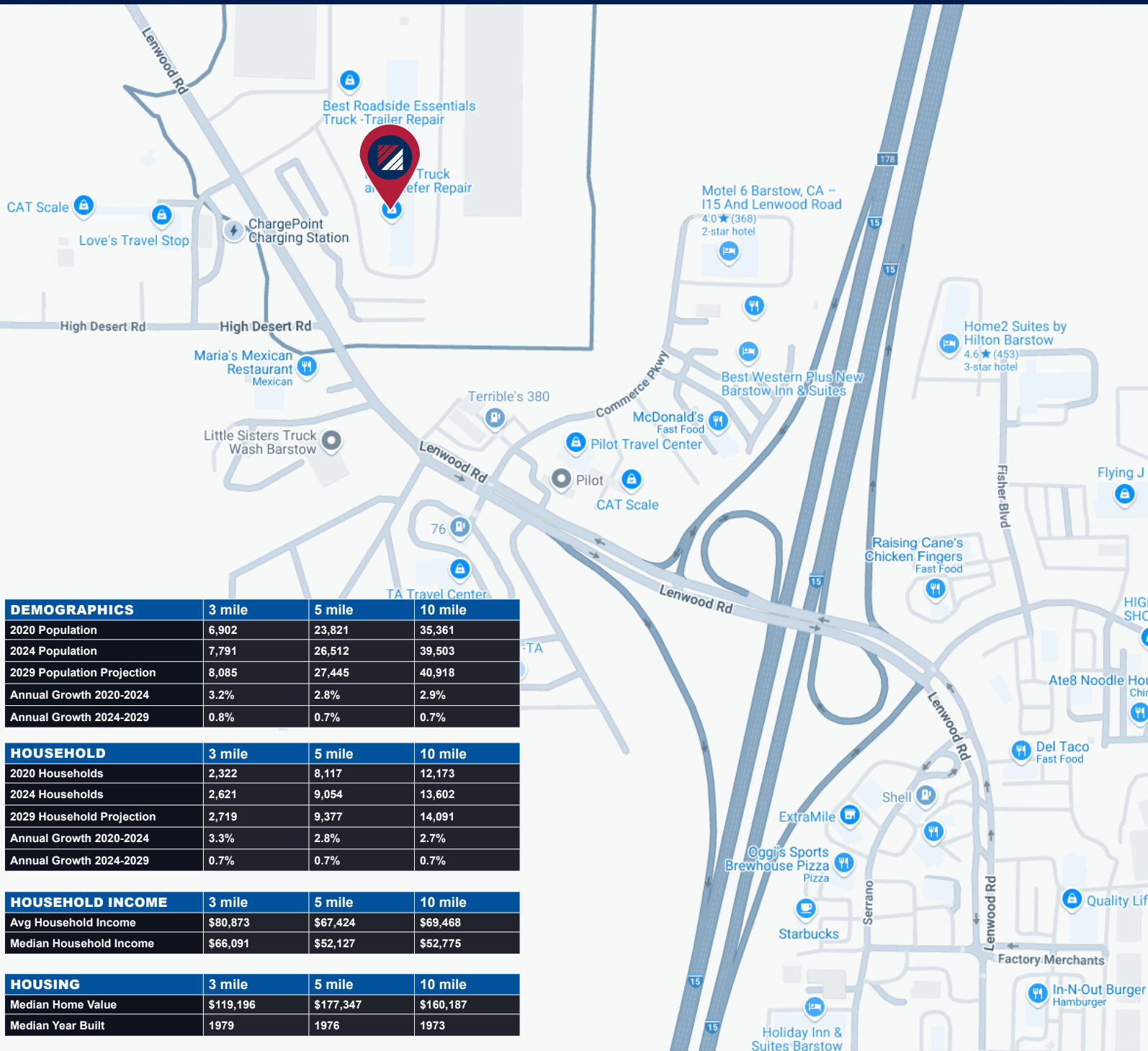
Although all information is furnished regarding for sale, rental or financing from sources deemed reliable, such information has not been verified and no express representation is made nor is any to be implied as to the accuracy thereof, and it is submitted subject to errors, omissions, changes of price, rental or other conditions, prior sale, lease or financing, or withdrawal without notice. All Maps provided courtesy of Google Maps, Bing Maps, and Google Earth. D/AQ Corp. # 01129558

FOR LEASE

±23,556 SF TRUCK REPAIR FACILITY

LOCATION MAP & DEMOGRAPHICS

2591 LENWOOD DR. | BARSTOW | CA



FOR MORE INFORMATION, PLEASE CONTACT:

NOAH SAMARIN
EXECUTIVE V.P. | PRINCIPAL
M: 714.812.1289
nsamarin@daumcommercial.com
CADRE #01755814

TIM TANG
INDUSTRIAL REAL ESTATE
D: 949.648.1650 | M: 909.834.8777
ttang@wetrustrealty.com
Lic. #02237441
WeTrust Realty#: 02125613



Although all information is furnished regarding for sale, rental or financing from sources deemed reliable, such information has not been verified and no express representation is made nor is any to be implied as to the accuracy thereof, and it is submitted subject to errors, omissions, changes of price, rental or other conditions, prior sale, lease or financing, or withdrawal without notice. All Maps provided courtesy of Google Maps, Bing Maps, and Google Earth. D/AQ Corp. # 01129558